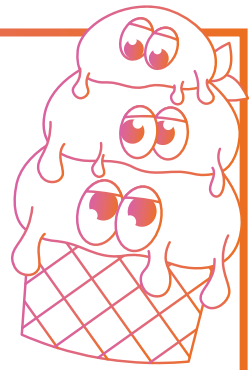


Maison de melt



Recreate the Marshmallow Melt

Model's hair was lightened with Blondorplex + 1.9% Welloxon Perfect Pastel to remove some previous banding.

Color Touch Melt Recipe

Mixture 1 - 10/0 1.9% A clean blonde shade

Mixture 2 - 20g 9/16 + 20g 10/6 + 1g 0/68 Lilac

Mixture 3 - 20g 9/96 + 20g 10/05 + 1g 0/56 Soft Pink

Mixture 4 - 20g 10/81 + 20g 8/81 + 1g 0/88 Delicate Blue

All mixed 1:2 with 1.9% Color Touch Emulsion

marshmallow melt

