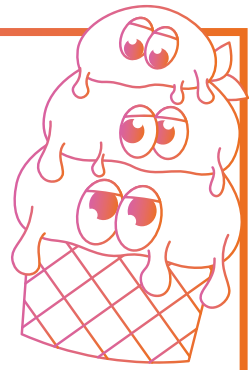


Maison de melt



Recreate the Red Velvet Melt

Model's hair was lightened with Freelights + 9% Freelights Developer before applying Koleston Perfect $\frac{1}{2}$ 4/0 + $\frac{1}{2}$ 6/45 + 6% Welloxon Perfect to the roots.

Color Touch Melt Recipe

Mixture 1 - 0/45
Mixture 2 - 0/54
Mixture 3 - 77/45

All mixed 1:2 with 4% Color Touch Emulsion

red velvet melt

