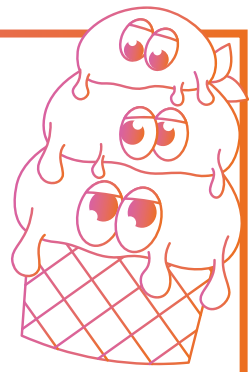


# Maison de melt



## Recreate the Ruby Chocolate Melt

Model's hair was lightened with Blondorplex + 4% Welloxon Perfect

## Color Touch Melt Recipe

Mixture 1 - 30g 9/03 + 2g 55/65 (applied to the roots)

Mixture 2 - 20g 9/36 + 10g 10/0 + 3g 55/65

Mixture 3 - 10g 9/73 + 20g 9/16 + 4g 55/65

All mixed 1:2 with 1.9% Color Touch Emulsion

# ruby chocolate melt

